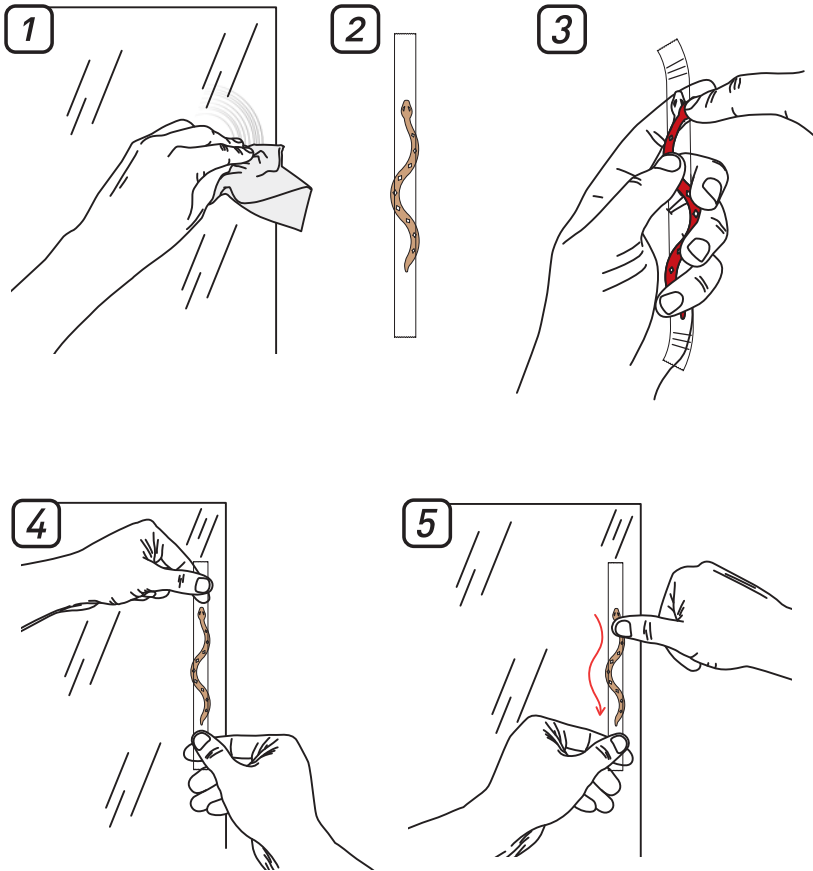


## Clear Finger Grip Installation Instructions



\*Important: The item cannot be repositioned once affixed. Doing so may result in the breaking of the item or potentially breaking the glass on which it was laid. To safely remove the item, use a bread knife or flat bladed screw driver to lift the tail/head. Once lifted simply lift away from the panel. Clean off the any remaining residue with Isopropanol, Methylated Spirits or Turpentine (**DO NOT** use Methylated Spirits or Turpentine prior to installation).

Follow these steps and you will ensure that the product you have purchased looks professionally installed, enhancing your enclosure.

1. Decide where you want to place the finger grip and prepare the area with Isopropanol Alcohol. If you do not have access to this, you can simply use water but do not use detergent. Using a lint-free cloth, remove any grime/dirt and then dry with another lint-free cloth. The surface must be totally void of residue and completely dry. **DO NOT** use Methylated Spirits or Turpentine.
2. Use a piece of sticky tape which is approximately 100mm longer than the finger grip and place this over the non-adhesive side of the finger grip. Ensuring it is centralised - this will aid in placement.
3. Using your fingernail or preferably tweezers, gently remove the red liner from the adhesive side of the finger grip (ensure that you are not also removing the adhesive layer). Start at the head and peel off towards the tail. **DO NOT** allow your fingers/skin to contact the adhesive surface as this will reduce the adhesion quality significantly.
4. Hold the two ends of the tape to cradle the finger grip and ensure the head and tip of the tail are aligned vertically.
5. With your thumb from your hand holding the tape at the head of the finger grip, press down firmly starting at the head down the length of the body with constant pressure. Once in place, firmly press against the finger grip with your thumb with approximately double the pressure. This will ensure the adhesive has bonded with as close to 100% of the surface of the glass. Then remove the tape and protective paper liner.

Your professionally installed finger grip can now be used immediately - no curing required.